

ENGEL Used Machinery

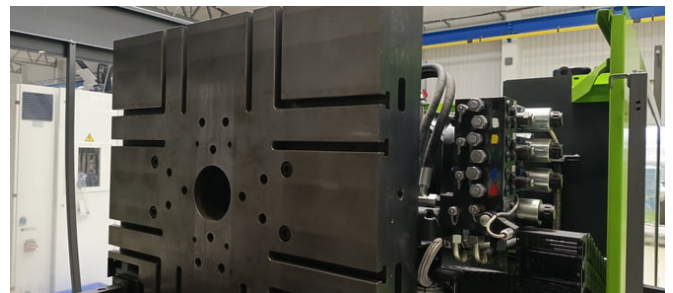
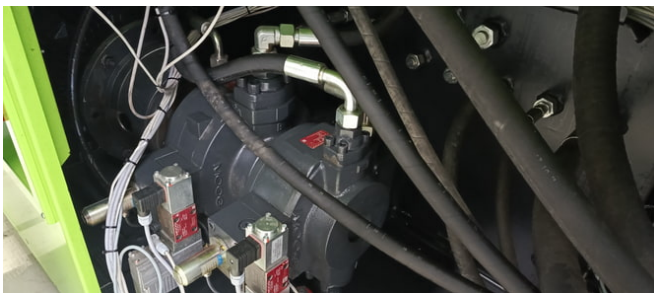
VC 1050/260

Technical details

Series **victory**
Machine type **VC 1050/260**
Drive **hydraulic**
Year of manufacture **2011**
Safety Standard **CE**
Location **CZ**
Availability **immediately**

Injection unit type **Horizontal**
Injection unit **1050**
Injection material **Thermoplastics**
Screw diameter **60 mm**

Type of construction **tiebar-less**
Platen size (h x v) **1100 x 1000 mm**
Clamping force **2600 kN**
Max. platen distance **1300 mm**



Leo Praher
General Manager
ENGEL Used Machinery



Leo Praher
General Manager
ENGEL Used Machinery