

ENGEL Used Machinery

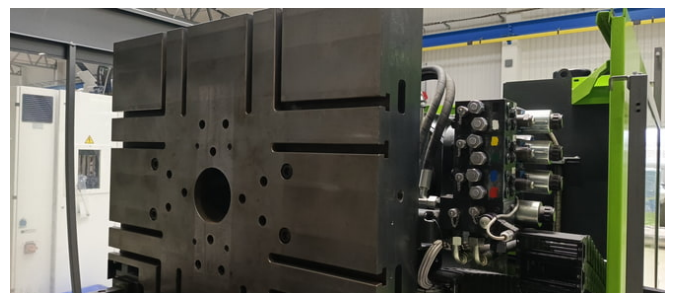
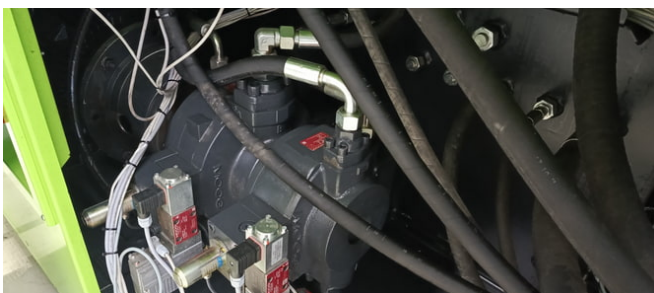
# VC 1050/260

## Technical details

Series **victory**  
Machine type **VC 1050/260**  
Drive **hydraulic**  
Year of manufacture **2011**  
Safety Standard **CE**  
Location **CZ**  
Availability **immediately**

Injection unit type **Horizontal**  
Injection unit **1050**  
Injection material **Thermoplastics**  
Screw diameter **60 mm**

Type of construction **tiebar-less**  
Platen size (h x v) **1100 x 1000 mm**  
Clamping force **2600 kN**  
Max. platen distance **1300 mm**



Leo Praher  
General Manager  
ENGEL Used Machinery



Leo Praher  
General Manager  
ENGEL Used Machinery